



**WALNUT MEWS**  
THORPE ROAD - PETERBOROUGH

## 2 Bedroom Apartments

### Walnut House

Six 2 Bedroom Apartments - Plots 17-22

Walnut Mews is a prestigious city centre development of apartments and townhouses in the popular area of Thorpe Road, Peterborough. These offer well proportioned homes in a central location with excellent road and rail links.

- Entrance Hall
- Underfloor Heating
- Quality Fitted Kitchen
- Dining Area
- Living Room
- Master Bedroom with En Suite
- 1 Further Double Bedroom
- Family Bathroom
- Allocated Parking



To book a viewing or to register your interest please call :

**01733 774444**



[www.cookandward.com](http://www.cookandward.com)





**WALNUT MEWS**  
THORPE ROAD - PETERBOROUGH

# 2 Bedroom Apartments

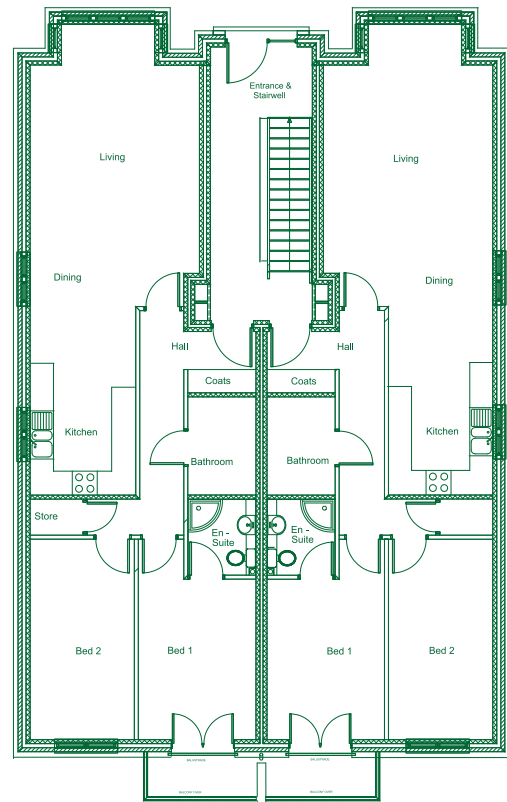
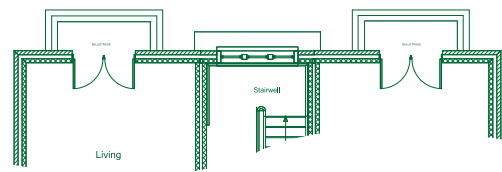
## Walnut House

Six 2 Bedroom Apartments - Plots 17-22

Comprising :

Entrance Hall	
Kitchen/Dining Area	4700 x 2600mm 15'4 x 8'5ins
Living Area (into Bay Window)	4225 x 7000mm 13'9 x 22'9ins
Bedroom 1	5000 x 2932mm 16'4 x 9'6ins
En Suite	1900 x 1700mm 6'2 x 5'5ins
Bedroom 2	5000 x 2600mm 16'4 x 8'5ins
Bathroom	2350 x 1700mm 7'7 x 5'5ins

Plots 21 & 22 (second floor) benefit from a balcony instead of a bay window.



It is not possible in a brochure of this nature to do more than give a general impression of the range, quality and variety of the homes we have on offer. The artist's impressions, floor plans, configurations and layouts are included for guidance only. The house may vary in terms of elevational design details, position/size of garage, and materials used. Such changes are due to our commitment to creating homes of individual character, although similar to others. We operate a policy of continuous product development so there may be material differences between the accommodation depicted in our literature and that on offer on any particular development, or at different times during the progress of any development.

The Company therefore gives notice to prospective purchasers that none of the material issued or visual depictions of any kind made on behalf of the Company can be relied upon as accurately describing, in relation to any particular or proposed house or development of the Company, any of the Specified Matters from time to time prescribed by an Order made under the Property Misdescriptions Act 1991, which is effective from 4th April 1993. All such matters must be treated as intended for general illustration and guidance only. They are subject to change from time to time without notice and their accuracy is not guaranteed, nor do they constitute a contract, part of a contract or a warranty.

Another quality development by ...

Poplar Farm Coates Peterborough PE7 2DU  
Telephone 01733 841931 Facsimile 01733 840489  
info@allenwarner.co.uk www.allenwarner.co.uk

